



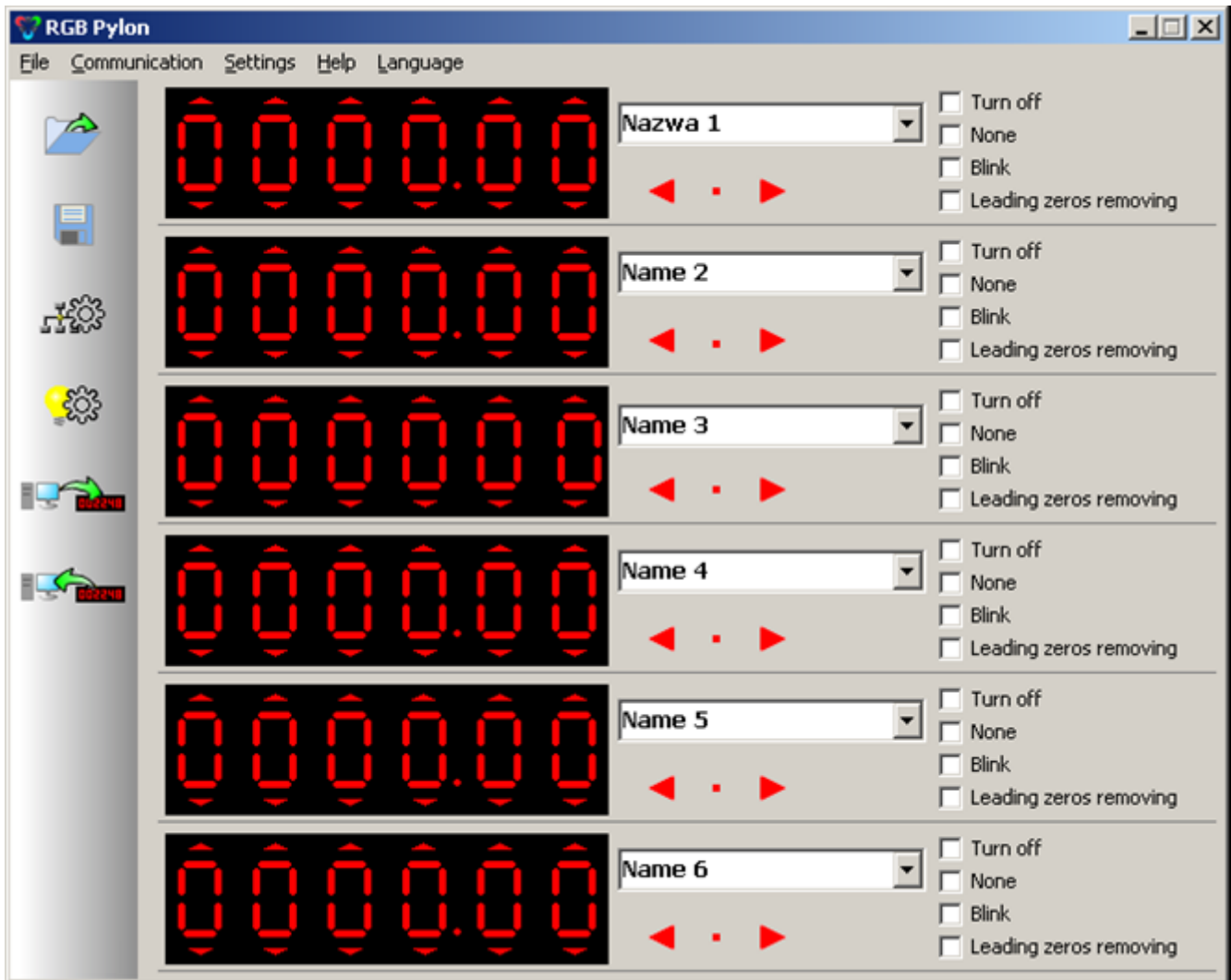
RGB Technology[®]
MODERN TECHNOLOGIES

RGB Pylon 2

User`s manual

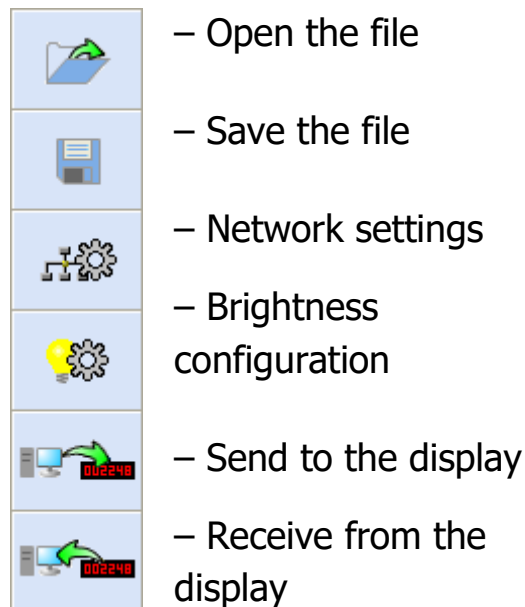
1. Start

After start you can see the main menu



P. 1. Main menu

Quick Access buttons provide easy access to main functions to the program menu.



P. 2. Quick Access buttons

2. Price settings

2.1. Price settings

The maximum number of signs is six. To set the price please use the red arrows above or below the sign. To move the dot sign use the blue arrows on the right from the price. The dot sign may be set in one of five positions or deleted.



P. 3. Price settings field

The properties of the price display

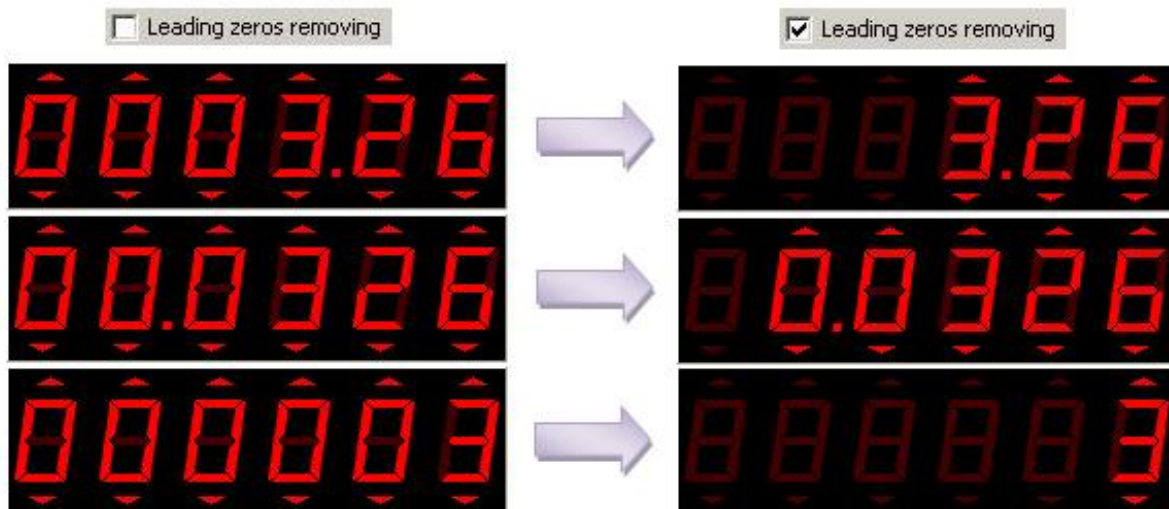
There are four options of the price display.

- **Turn off** – the price will be turned off,
- **None** – the „minus” signs will appear on the displays. (see p. 4),



P. 4. **None** option

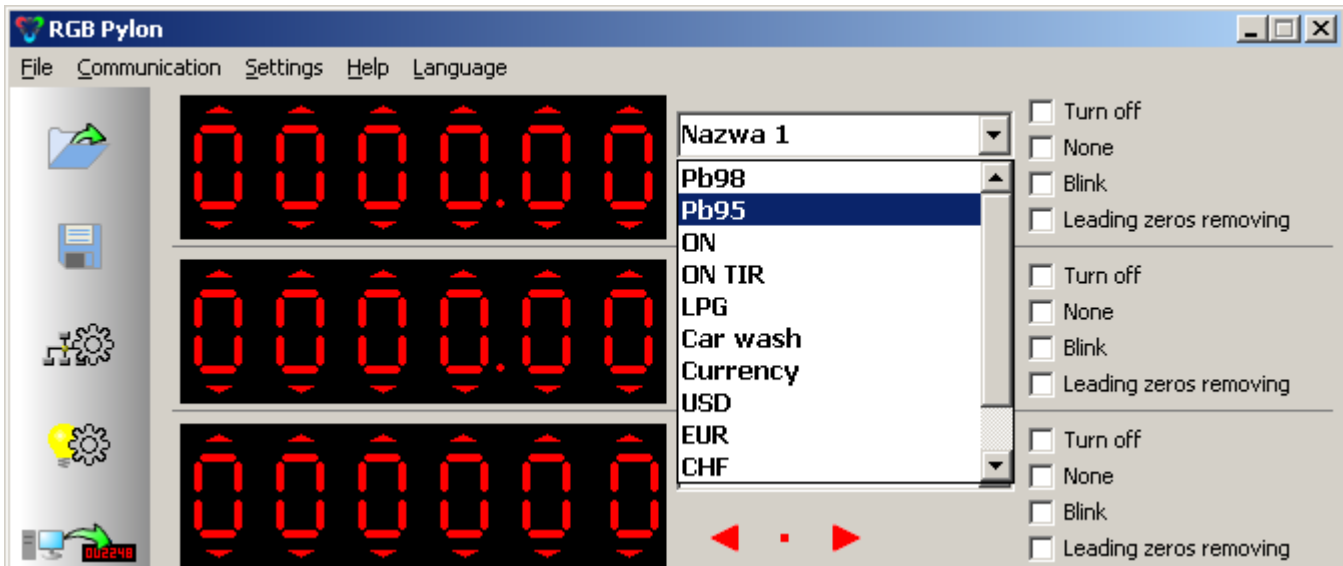
- **Blink** – the price will blink. In case there are two options **None** and **Blink** are marked the minuses will blink on the display.
- **Leading zeros removing** – the „0” signs before the entered value will be removed. (see P.5).



P. 5. **Leading zeros removing**

2.2. Price name


To set the name of the price use the window on the right from the price field. You can choose the name from the menu or write your own variant.(see P.6)

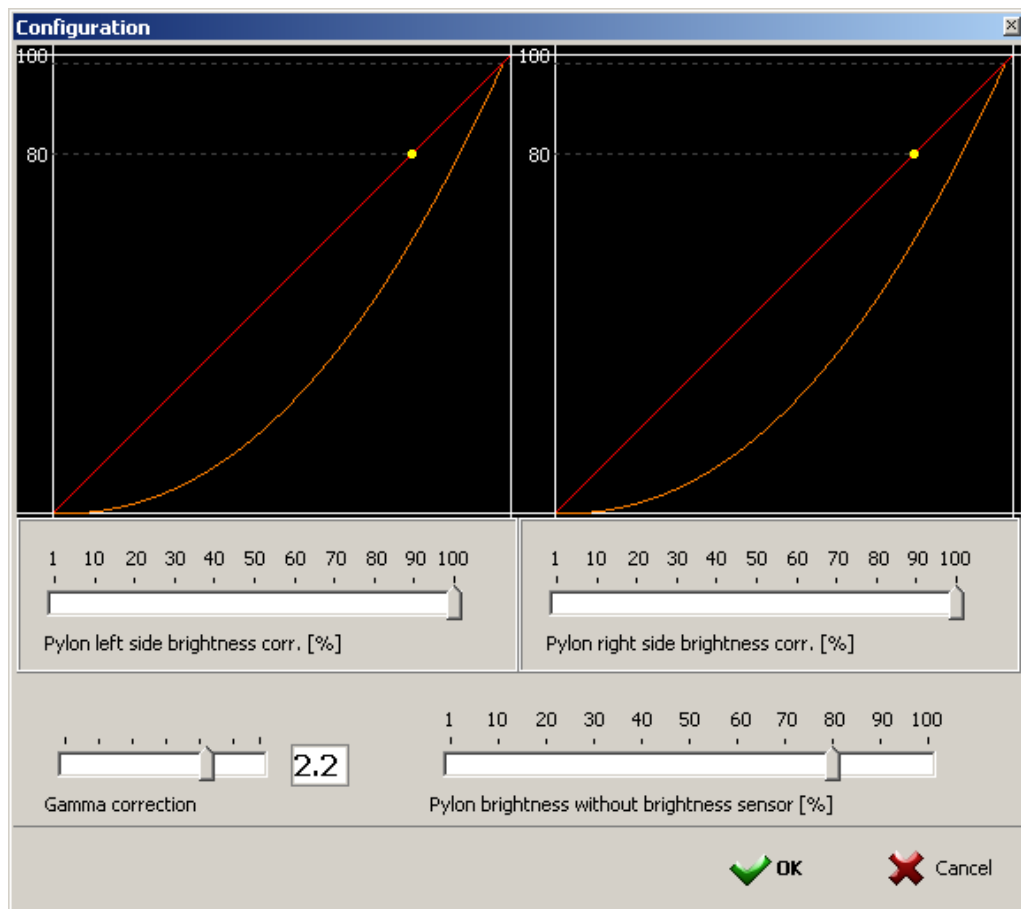


P. 6. Price name field

3.P-seria display configuration




Click on  or choose from the menu *Settings / Brightness configuration...*(see P.7) . Upper part represents two graphics showing the brightness of both sides of pylons. Use the slider to correct the brightness of the display in comparison with brightness given on the brightness sensor (which show the brightness of the environment). In case there is the display without sensor the level of brightness regulated by the slider „ **Pylon brightness without brightness sensor**”. The brightness value is represented by yellow dot. The gamma correction represents a characteristic (curvature) of a plot (orange colour). Its value may be changed with the slider „**Gamma correction**” Click „OK” to confirm the changes or „**CANCEL**” for cancelling the operation.




P. 7. Window of P-seria display configuration

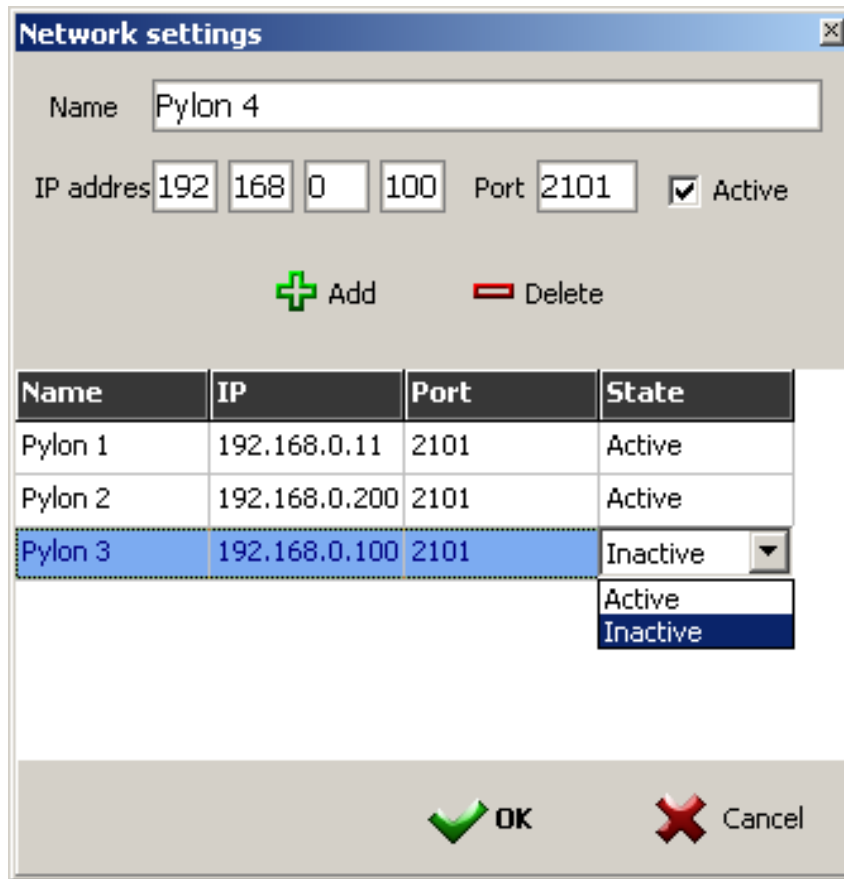
4. Network settings



Click  or choose from the menu *Settings / Network settings...* (See P.8). To send set price and brightness configuration to several displays add to the list the record of each display. To add record to the list enter the name of display (optional), proper address IP, port and set the state „ **Active**”(optional). After click


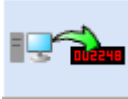
on  , the record will appear. To delete the record chose the record on the

list and click on  . In column **State** two options are possible: **Active** or **Inactive** . To send the configuration and price to the display in **State** column of certain display should be marked option **Active**, otherwise the display will be omitted. Click „**OK**” to confirm.




P. 8. Network settings window

5. Communication with display

To send the price and configuration to the display (s) click on . To receive the information from the display after properly settings are made click on .

6. File

To save the Project click on  or choose *File / Save....*

To open a file click on  or choose from the menu *File / Open....*